

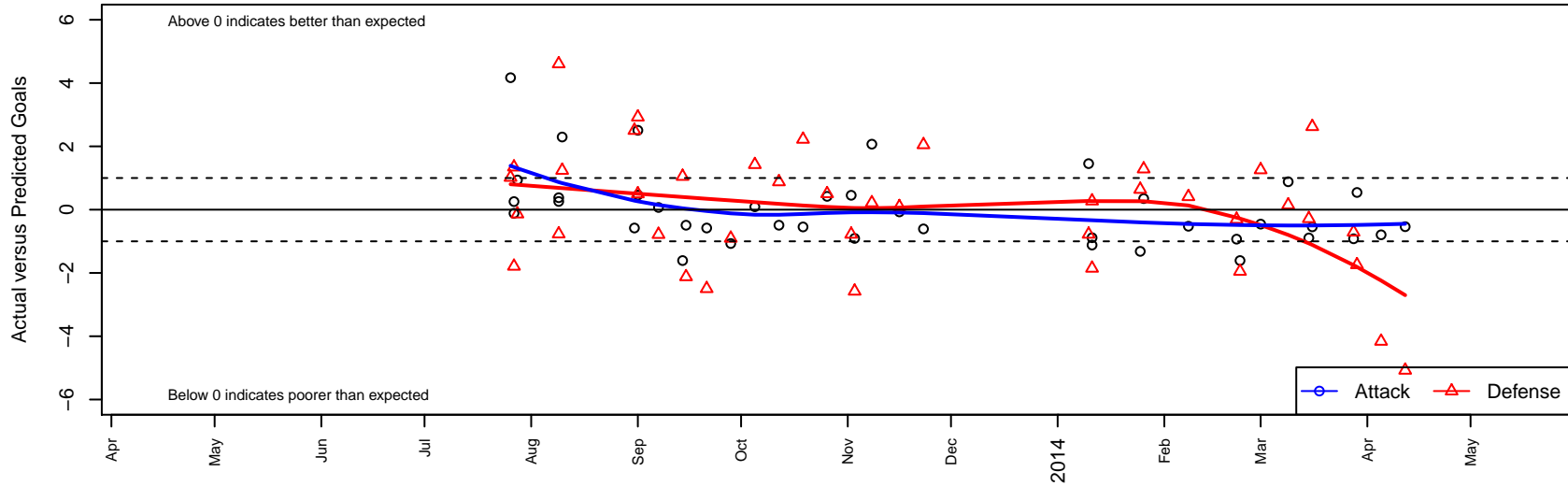
NWN Blue B01

NW Nationals
 Mountlake Terrace, WA
 B01 total strength=429
 attack=0.37 defense=0.2
 fall league = RCL B01 Div 3, Spr RCL B01 Div 3
 alt names used:
 NW Nationals B01 Blue
 NW Nationals Blue [B01]
 NWN B01 Blue B
 NWN B01 Blue

Venues played:
 Crossfire Select Cup BU12 Silver
 River Jam Samba U12
 Labor Day Cup BU12
 RCL B01 Div 3
 PacNW Winter Classic Premier II U12
 Spr RCL B01 Div 4
 Challenge Cup B01 Division 2 – Challenge 2



NWN Blue B01
 Dots are actual minus expected GF (blue circles) and GA (red triangles).
 Blue line is smoothed change in attack strength. Red is smoothed change in defense strength.



| | date | home | | away | | venue | pred.home | pred.away |
|-------|-------------|----------------------------|----|---------------------------|---|--|------------------|------------------|
| 26021 | 2014-04-12 | Seattle United S Black B01 | 14 | NWN Blue B01 | 0 | Challenge Cup B01 Division 2 – Challenge 2 | 8.93 | 0.54 |
| 25633 | 2014-04-05 | 3 Rivers Black B01 | 10 | NWN Blue B01 | 0 | Challenge Cup B01 Division 2 – Challenge 2 | 5.84 | 0.79 |
| 25436 | 2014-03-29 | NWN Blue B01 | 1 | Seattle United Nova B01 | 7 | Challenge Cup B01 Division 2 – Challenge 2 | 0.46 | 5.26 |
| 25412 | 2014-03-28 | NWN Blue B01 | 0 | Mercer Island FC Heat B01 | 4 | Challenge Cup B01 Division 2 – Challenge 2 | 0.92 | 3.29 |
| 24955 | 2014-03-16 | NWN Blue B01 | 0 | SSC Shadow B B01 | 1 | Spr RCL B01 Div 4 | 0.54 | 3.62 |
| 24630 | 2014-03-15 | NWN Blue B01 | 1 | Eastside FC Blue B01 | 2 | Spr RCL B01 Div 4 | 1.89 | 1.72 |
| 24272 | 2014-03-09 | Slammers White B01 | 1 | NWN Blue B01 | 3 | Spr RCL B01 Div 4 | 1.15 | 2.12 |
| 23484 | 2014-03-01 | Seattle United Nova B01 | 4 | NWN Blue B01 | 0 | Spr RCL B01 Div 4 | 5.26 | 0.46 |
| 23253 | 2014-02-23 | FC Alliance B B01 | 4 | NWN Blue B01 | 0 | Spr RCL B01 Div 4 | 2.05 | 1.61 |
| 23001 | 2014-02-22 | Eastside FC Grey B01 | 3 | NWN Blue B01 | 0 | Spr RCL B01 Div 4 | 2.69 | 0.93 |
| 22292 | 2014-02-08 | NWN Blue B01 | 2 | Crossfire Premier D B01 | 2 | Spr RCL B01 Div 4 | 2.52 | 2.41 |
| 21854 | 2014-01-26 | NWN Blue B01 | 2 | FWFC White B01 | 0 | Spr RCL B01 Div 4 | 1.65 | 1.28 |
| 21724 | 2014-01-25 | NWN Blue B01 | 0 | Harbor Premier Green B01 | 2 | Spr RCL B01 Div 4 | 1.32 | 2.64 |
| 21119 | 2014-01-11 | NWN Blue B01 | 1 | Slammers White B01 | 3 | PacNW Winter Classic Premier II U12 | 2.12 | 1.15 |
| 21122 | 2014-01-11 | NWN Blue B01 | 0 | PacNW White B01 | 4 | PacNW Winter Classic Premier II U12 | 0.89 | 4.27 |
| 21048 | 2014-01-10 | Crossfire Premier C B01 | 5 | NWN Blue B01 | 2 | PacNW Winter Classic Premier II U12 | 4.22 | 0.55 |
| 19113 | 2013-11-23 | FC Alliance B B01 | 0 | NWN Blue B01 | 1 | RCL B01 Div 3 | 2.05 | 1.61 |
| 18452 | 2013-11-16 | NWN Blue B01 | 1 | Blackhills FC Black B01 | 4 | RCL B01 Div 3 | 1.07 | 4.10 |
| 17551 | 2013-11-08 | NWN Blue B01 | 3 | Snohomish United Red B01 | 3 | RCL B01 Div 3 | 0.93 | 3.22 |
| 17221 | 2013-11-03 | Slammers Orange B01 | 7 | NWN Blue B01 | 0 | RCL B01 Div 3 | 4.42 | 0.91 |
| 16741 | 2013-11-02 | Crossfire Premier C B01 | 5 | NWN Blue B01 | 1 | RCL B01 Div 3 | 4.22 | 0.55 |
| 15852 | 2013-10-26 | NWN Blue B01 | 1 | Eastside FC White B01 | 5 | RCL B01 Div 3 | 0.58 | 5.50 |
| 14927 | 2013-10-19 | NWN Blue B01 | 0 | Crossfire Premier C B01 | 2 | RCL B01 Div 3 | 0.55 | 4.22 |
| 13871 | 2013-10-12 | PacNW Blue B01 | 5 | NWN Blue B01 | 0 | RCL B01 Div 3 | 5.88 | 0.49 |
| 12849 | 2013-10-05 | NWN Blue B01 | 1 | Slammers Orange B01 | 3 | RCL B01 Div 3 | 0.91 | 4.42 |
| 11911 | 2013-09-28 | Blackhills FC Black B01 | 5 | NWN Blue B01 | 0 | RCL B01 Div 3 | 4.10 | 1.07 |
| 10959 | 2013-09-21 | Eastside FC White B01 | 8 | NWN Blue B01 | 0 | RCL B01 Div 3 | 5.50 | 0.58 |
| 10420 | 2013-09-15 | NWN Blue B01 | 0 | PacNW Blue B01 | 8 | RCL B01 Div 3 | 0.49 | 5.88 |

| | date | home | | away | | venue | pred.home | pred.away |
|------|-------------|------------------------------|---|-------------------------------|---|----------------------------------|------------------|------------------|
| 9987 | 2013-09-14 | NWN Blue B01 | 0 | FC Alliance B B01 | 1 | RCL B01 Div 3 | 1.61 | 2.05 |
| 9048 | 2013-09-07 | Snohomish United Red B01 | 4 | NWN Blue B01 | 1 | RCL B01 Div 3 | 3.22 | 0.93 |
| 8668 | 2013-09-01 | NWN Blue B01 | 1 | Seattle United S Black B01 | 6 | Labor Day Cup BU12 | 0.54 | 8.93 |
| 8670 | 2013-09-01 | Pumas Unknown B01 | 1 | NWN Blue B01 | 4 | Labor Day Cup BU12 | 1.50 | 1.49 |
| 8541 | 2013-08-31 | NWN Blue B01 | 0 | Eastside FC White B01 | 3 | Labor Day Cup BU12 | 0.58 | 5.50 |
| 6154 | 2013-08-10 | NWN Blue B01 | 5 | WPFC Fury Black B01 | 1 | River Jam Samba U12 | 2.70 | 2.24 |
| 5896 | 2013-08-09 | Tacoma United San Martin B01 | 2 | NWN Blue B01 | 1 | River Jam Samba U12 | 6.61 | 0.74 |
| 5897 | 2013-08-09 | TUSK United B01 | 6 | NWN Blue B01 | 1 | River Jam Samba U12 | 5.23 | 0.62 |
| 4972 | 2013-07-28 | NWN Blue B01 | 3 | Lake Hills Legends B01 | 2 | Crossfire Select Cup BU12 Silver | 2.06 | 1.86 |
| 4662 | 2013-07-27 | NWN Blue B01 | 1 | Crossfire Select Nakamura B01 | 2 | Crossfire Select Cup BU12 Silver | 1.12 | 3.35 |
| 4671 | 2013-07-27 | TC United B01 | 6 | NWN Blue B01 | 1 | Crossfire Select Cup BU12 Silver | 4.21 | 0.74 |
| 4508 | 2013-07-26 | Fuerza FC Academy B01 | 0 | NWN Blue B01 | 9 | Crossfire Select Cup BU12 Silver | 1.02 | 4.83 |